

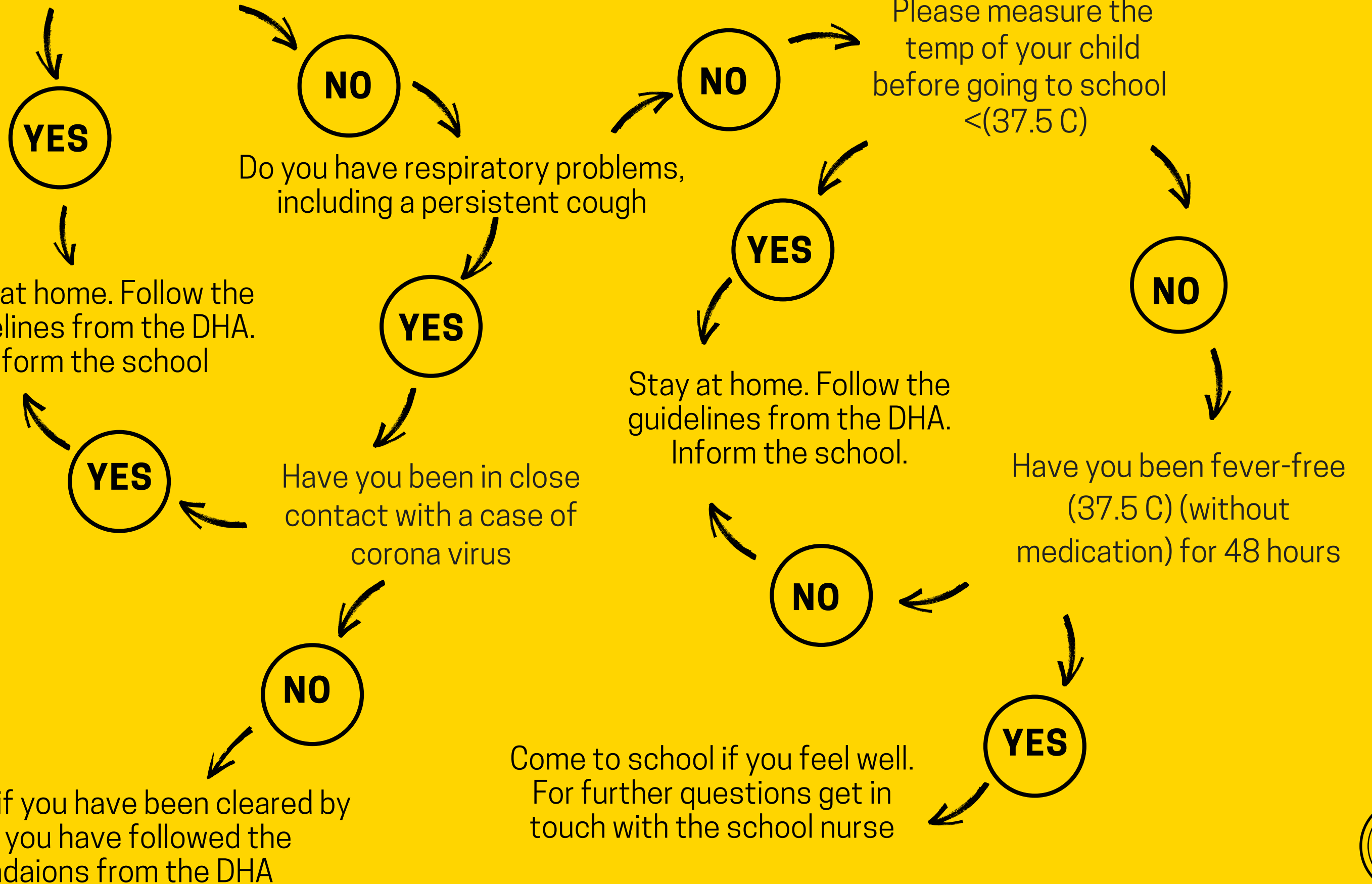
School attendance policy for illness



- Students who show any signs of illness will NOT attend school. If any member of the household has symptoms of Covid-19, then please do NOT send your child to school. Students who show signs of illness or have a temperature of 37.5 C or higher will be sent home from school.
- Member of administration, nurse, or teacher will phone a parent to arrange an immediate pick up of the sick child.
- If your child has a fever during the day, they will not be allowed to attend school the next day. Your child has to be fever free for 48 hours before returning back to school. Your child can return to school 48 hours after he/she is no longer showing ANY symptoms of illness.
- Students returning to school after an illness need to first report to the School Clinic before reporting to the class.
- Your child should be well enough to attend school without any painkillers or other fever reducing drugs in the morning. If you feel your child needs medication in order to 'get through the day' then your child should stay home.

DECISION MAKER

IS ANYONE IN YOUR HOUSEHOLD BEING TESTED FOR CORONAVIRUS



**Operational
Procedures for
opening the Amity
School Dubai due to
Covid - 19**



Procedures for entry and exit for students drop off and pick up



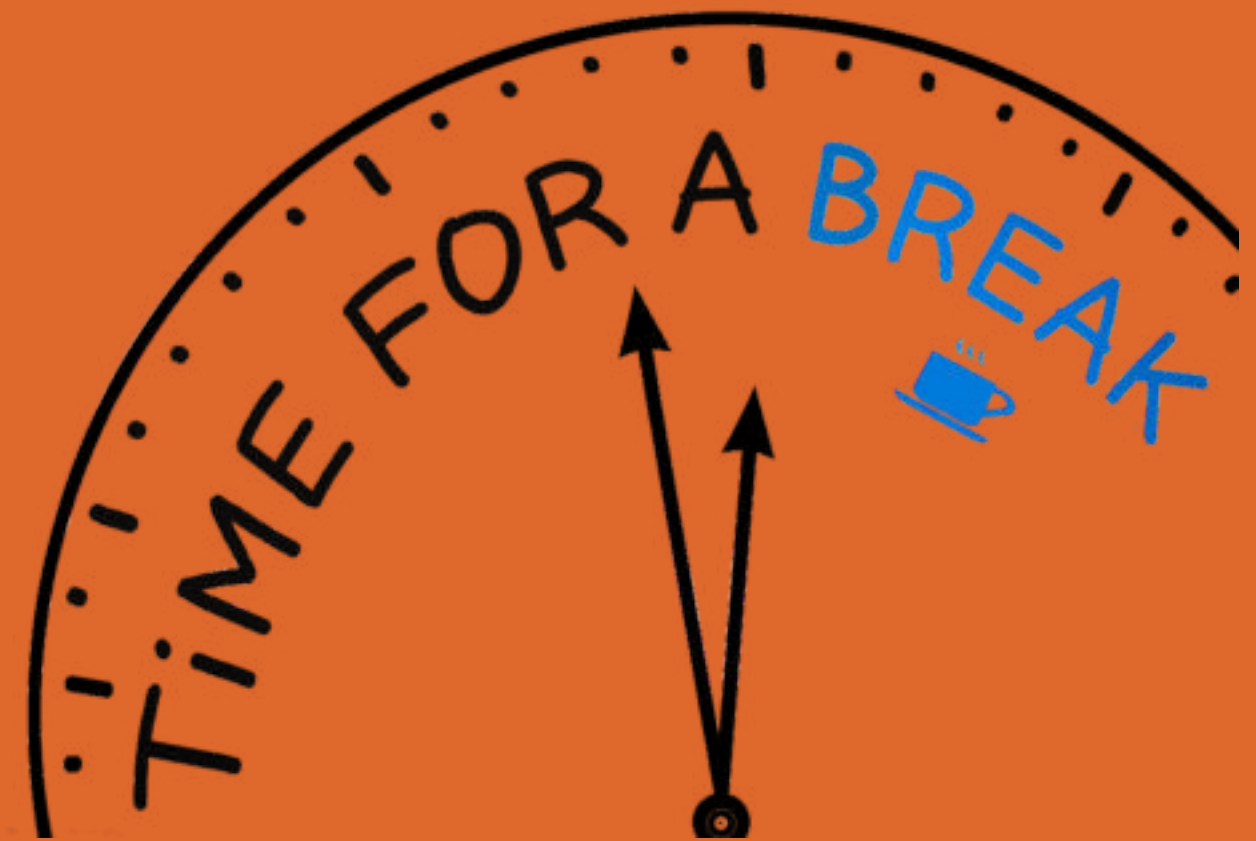
- All four entry points to the school building will have directions based on the time of the day indicated through floor markings (entry direction during morning and exit direction during afternoon)
- Queuing areas at all access points will be demarcated with standing interval of 2 m apart



Student Arrival and Departure Time

- All students (bus and own transport) will arrive at 7.20 am and depart from school at 12.00 pm
- To ensure safety and to minimize contact, all GROUP A students will be exposed to two groups - 1) Bus Bubble and 2) Class Bubble
- Grades I to VII will have 2 learning activities on 2 out of 5 week days, conducted at home through distance learning

Please refer to Appendix I for details of the Rhythm of the Day for group A (On-campus) and group B (Online) students across all the 3 phases – KG, Grades I and II and Grades III to VII.



Break Time

- Students will be guided by their teachers to follow snack time protocols, visit the wash room or drink water
- Regular handwashing will be encouraged
- Drinking water dispensers in school will be sealed
- All students will carry their own drinking water bottles to school everyday
- Students are not permitted to share food from their snack box with other students

Entry procedure for students and staff members

- Students and staff members using the school transport will alight from the buses in a staggered manner. The subsequent bus will wait until all students in the previous bus disembark and move towards the entry point.
- Staff members using own transport will use gate no. 1. They will walk to the school Reception where they will be screened for body temperature.
- Primary and Middle School own transport students will be dropped off at gate no. 1. They will walk to the school Reception where they will be screened for body temperature.
- Similarly, Kindergarten students will be dropped off at gate no. 5. School nannies will escort the students from gate no. 5 to the school Reception where they will be screened for body temperature.
- Students will be allowed to walk into the school and straight towards their classrooms if:
 - a) the temperature reads less than 37.5°C and
 - b) students over the age of six are wearing a mask
- If any student over the age of six is not wearing a mask he / she will be provided with one at the Reception. Parents are requested to deposit 5 extra masks in a zip lock pouch with the name and grade of their child to the class teacher. If the temperature of any student reads more than (or equal to) 37.5°C, then the student will be asked to wait in a nearby designated area until his or her temperature stabilizes.
- If the temperature doesn't stabilize within 5 -10 minutes, the student will be moved to the isolation room and the emergency procedure will be followed.



Exit Procedures



For school transport students and staff members

- Exit times for buses will be staggered to reconfigure class groups with bus groups
- Students from each classroom will form a queue following the 2 m physical distancing protocol and will move towards the bus bay



For Primary and Middle School students using own transport

- Parents will wait for their children at the Main Reception in demarcated areas to maintain physical distancing. Students will wait inside the assembly area. Both parents and students will maintain physical distance of 2 m while waiting. Students will be handed over to each parent following the exit procedure



For Kindergarten students using own transport

- A staggered pick up timing for Kindergarten students using Own Transport will be communicated to the parents. This will start at 11.45 am, after all the buses leave the school premises
- Parents will wait in the KG Reception. Students will be escorted by the school nanny and will be handed over to the parent

Guidelines for Parents



- Parents are requested not to enter the school premises, unless they are supporting a Student of Determination. Exceptions can be made to allow one parent to accompany a KG student in the morning, if needed.
- Parents will stand in the queue and must wear a mask.
- Non-contact temperature screening will take place before entering the school.
- Students will queue in the corridor, maintaining a 2m distance from other families/students.
- Parents will be allowed to remain in the designated waiting area to pick up their child for a maximum of 10 minutes. During this period, parents will be required to maintain a 2 m distance from other people

**Revised
arrangement for
bus transportation
for students**



- Arrangements are in place for provision of additional buses to ply and be compliant with half-capacity measures. Permanent seats will be allocated in the respective buses for each students
- All vehicles will be sanitized every morning and afternoon, prior to each journey. Deep cleaning of the vehicle will be done at the end of each day. All records will be maintained as per regulatory requirements. Each vehicle will display a sign 'Sanitization Program in Place'. Communication will be sent to provide personal hand sanitizers to the child and instructed to be used before boarding and after alighting from the bus
- All students will carry the RFID card for every journey. Driver will be provided with scanners to support students for contactless RFID card check. Adequate signage describing correct hygiene practices will be placed in the buses (visual and written instructions)
- Signs will be placed on the seats for seating guidance. Students will be expected to strictly adhere to the allocated seating plan.
- Students will maintain the physical distancing standards for each journey (while boarding, while seating and while disembarking)
- All students who are in Grade 1 and above will wear a mask
- Temperature checks will be carried out for each child before pick up from home

- Younger students will be accompanied by an adult guardian until boarding the bus, as they will not be able to board, if found to have an elevated body temperature
- No food or drink (other than water) will be consumed on the bus
- Students must sanitize their hands while getting on the bus and once more before dismounting
- Students must maintain a distance of 1.5 m from each other while boarding and dismounting the bus
- Only one bus at time will be allowed for students to descend and enter the school premises
- Students will wait inside their bus until all students have disembarked from the previous bus
- Each bus will have at least one bus conductor to check students' temperature, dispense hand sanitizer, tend to students who require assistance, and usher them when disembarking
- All other safety measures (i.e. driver partitions, driver/bus conductor health requirements, etc.) for buses will be followed diligently
- Siblings will be seated together as long as they maintain social distancing from other groups of siblings/other students
- Where Students of Determination require additional support from an adult, a clear and comprehensive Risk Assessment will be conducted and a travel plan developed
- During bus registration, a bus safety guide and pictogram will be issued to the parents and students

Changes in Classroom Arrangements



- A full site audit and risk assessment will be taken by the manager of School Operations Manager and the Health and Safety Officer to ensure that the site has minimized the risk of transmission to the best of their ability
- Students returning to school, have been allocated into a social 'bubble' of not more than 10 / 18/ 15 students. Students will spend their day together, socially distanced, within that bubble. They have an allocated classroom and will only mix within the bubble and their allocated teachers
- Each 'bubble' has a designated space within the school campus for work and play. Each student will have an allocated place within the bubble
- Each 'bubble' will have a specific Teacher, who will lead them through their learning and will be within their 'bubble'
- Each student will have designated table/tray to contain all of their books and resources, so there will be no need for 'handing out'. Teachers will ensure that any work sheets/additional resources will be prepared one day prior and kept in the child's tray
- Lessons will be planned in such a way that they require little intervention from an adult Where significant assistance is needed, teachers will support from a social distance
- All frequently touched surfaces (i.e. equipment, door handles, work surfaces and toilets) used during the day will be cleaned throughout the day

- If a child brings in a packed lunch from home, it will be in their bag and will only be handled by themselves
- Teaching assistants will 'wipe' these 'touch surfaces' at regular intervals, and a 'deeper clean' will take place each evening as well
- For younger children, the resources made available for child-initiated learning will be carefully considered. For example, malleable resources, such as play dough, will not be shared and consideration will be given to their safe use, depending on circumstances. Resources for activities such as painting, sticking, cutting, small world play, indoor and outdoor construction activities will be carefully planned across the week and will be washed/disinfected before and after use
- A hand-gel sanitizer dispenser will be installed in every classroom. Every teacher will have a pack of disinfectant wipes. Students will stay in their designated seats throughout the day, even during the break time
- Resources in the class will be disinfected after every use. There will be no sharing of resources between the classes
- Rules for restroom usage will be explained to the children and followed strictly with reinforcement.
- Signage, floor markings and pictorial reminders for hygiene protocols will be displayed as per the government guidelines

- A small class library will be set up for an easy access of books for the children
- The resources for Arts will be permanently stationed in every class and will be disinfected after every use
- A procedure for sterilizing and sanitizing of the resources and stationery will be in place and will be followed every day for every class/bubble
- Teachers will be provided with transparent face shield so that their connect with the children is not hampered
- Classrooms for students under the age of 6 have a sanitization sink in each class and attached washrooms

